

***New Jersey Kids Count*** is a project of the Association for Children of New Jersey. Funded by the Annie E. Casey Foundation, this annual snapshot of child well-being is intended to inform policymakers and citizens of the challenges New Jersey faces in ensuring the health, welfare and safety of its youngest citizens.

***The New Jersey Kids Count 2005 Pocket Guide*** documents key measures of child well-being on the county and state levels. This handy pocket guide provides a quick glimpse at trends in major indicators of child well-being. Data for additional indicators are available on our website at [www.acnj.org](http://www.acnj.org).

As the state continues to reform its child welfare system, it is our hope that this report will help guide decision-making on the state and local levels.

#### **TABLE OF CONTENTS**

<b>2-3</b>	<b>Major Trends</b>
<b>4-6</b>	<b>Statewide Snapshot</b>
<b>7</b>	<b>Demographics</b>
<b>8-10</b>	<b>Child and Family Poverty</b>
<b>11-12</b>	<b>Child Health</b>
<b>13-14</b>	<b>Abused and Neglected Children</b>
<b>15-16</b>	<b>Early Care and Education</b>
<b>17-18</b>	<b>Troubled Teens</b>
<b>19-20</b>	<b>School Children</b>
<b>21-24</b>	<b>Data Sources</b>

**Association for Children of New Jersey**  
**35 Halsey Street**  
**Newark, NJ 07102**  
**973-643-3876**  
**973-643-9153**  
**[www.acnj.org](http://www.acnj.org)**  
**[www.kidlaw.org](http://www.kidlaw.org)**

**For more information about New Jersey Kids Count, email [nparello@acnj.org](mailto:nparello@acnj.org).**

## **NJ Offers Quality Early Education, But Has More Young Children in Poverty**

New Jersey has made great progress in providing public preschool to needy children. Not only have enrollments climbed dramatically, but the quality of these programs has been recognized nationally. These important early learning programs are one vital prong to helping children arrive at school ready to learn.

At the same time, though, there has been a disturbing increase in the percentage of poor families who are struggling to raise their young children. From 2000 to 2003, there was an alarming 40.7 percent increase in the percent of poor families who are raising children under 5, according to the most recent U.S. Census data. These families are unable to feed, clothe and house their children during the kids' most crucial years of growth and development.

This trend demands closer attention. It is vitally important that we craft more substantial ways to lift needy, young families out of poverty. This must be accomplished early on to provide these children with a solid chance of growing into healthy, productive adults.

This guide also shows that white New Jersey families continue to have an economic advantage over minority families. In 2003, white families earned a median income of about \$75,500 per year, compared to about \$45,500 for black families and roughly \$42,000 for Hispanic families.

Another alarming trend is a significant 51 percent increase in the number of uninsured children from 1999 to 2003. Fewer children were covered under their parents' insurance, while more children received Medicaid and FamilyCare. While these increases in subsidized health insurance are positive, the jump in uninsured children suggests that many families lack a "health insurance safety net." If a parent loses his/her job or an employer discontinues coverage due to costs, parents have nowhere to turn. Since 2002, the state has denied low-income parents access to FamilyCare. Children who lack health insurance are much less likely to visit the doctor and get the medicine they need to stay healthy.

## Other major New Jersey findings include:

- New Jersey's child population continues to grow. From 1999 to 2003, there was a 6.4 percent statewide increase in the number of children living in the Garden State.
- New Jersey also saw a nearly 19 percent increase from 2000 to 2003 in the number of grandparents who are raising their grandchildren, with 68,323 grandparents acting as primary caregivers in 2003.
- The number of children living in families receiving welfare increased 4 percent from 2003 to 2004.
- Food stamp enrollment is also on the rise, with nearly 11 percent more children receiving this important nutritional supplement in 2004 than in 2000.
- Preschool enrollments and the number of licensed child care centers continue to rise, while the number of people registered to provide child care in their own homes continues to decline.
- Incidents of school violence inched up 2.3 percent from 1999-2000 school year to the 2002-2003 school year.

(Note: Data sources and definitions appear at the back of this guide).

## Statewide Data

### Federal Poverty Levels

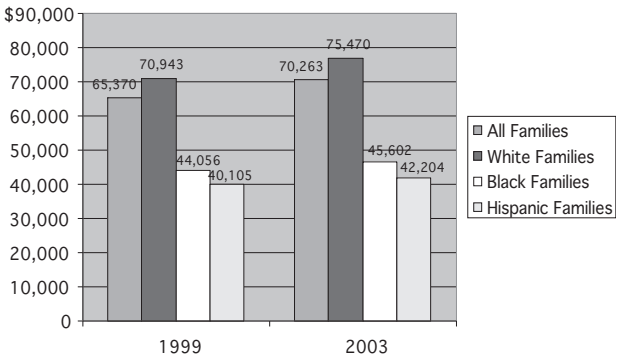
2003	
Number in Family	Gross Yearly Income
1	\$ 8,980
2	12,120
3	15,260
4	18,400
5	21,540
6	24,680
7	27,820
8	30,960
>8 add for each additional member	3,140

### Percent of All Poor Families by Age of Children

	2000		2003		% Change	
	Children Under 18	Children Under 5	Children Under 18	Children Under 5	Children Under 18	Children Under 5
NJ	73.6	10.8	77.9	15.2	5.8	40.7
US	79.7	16.8	79.0	16.8	-0.9	0.0

The total number of poor families in 2000 was 125,757 (NJ) and 6,614,923 (US). In 2003, it was 145,121 (NJ) and 7,143,075 (US).

### Median Family Income by Race



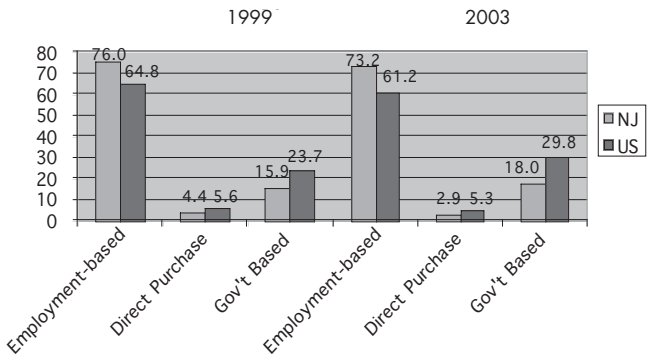
## Statewide Data (continued)

### Uninsured Children Under 18

	1999		2002		2003		% Change 1999-2003
	#	%	#	%	#	%	
NJ	157,000	7.9	210,000	9.7	237,000	11.0	51.0
US	9,285,000	12.8	8,531,000	11.6	8,373,000	11.4	-9.8

Note: Percent indicates percent of all NJ children who are uninsured.

### Insurance Type for Children Under 18



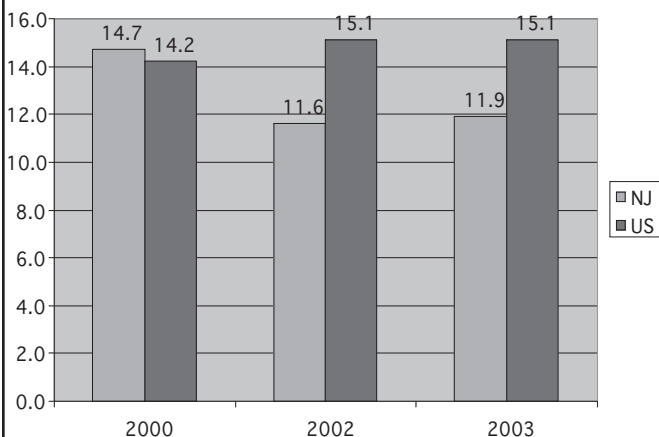
### Uninsured Children at or Below 200% of the Federal Poverty Level

	1999-01		2000-02		2001-03		% Change 1999-03
	#	%	#	%	#	%	
NJ	110,000	5.4	113,000	5.5	129,000	6.0	17.3
US	5,984,000	7.9	5,743,000	7.5	5,715,000	7.5	-4.5

Note: Includes children under age 19

## Statewide Data (continued)

### Percent of Disconnected Youths



Note: Disconnected young adults are persons ages 18-24 who are not enrolled in school, not working and have no degree beyond high school.

### Grandparents Responsible for Grandchildren

	2000			2003			% Change	
	Total Resp	Poor Resp	% Poor Resp	Total Resp	Poor Resp	% Poor Resp	Total Resp	Poor Resp
NJ	57,628	11,641	20.2	68,323	13,186	19.3	18.6	13.3
US	2,352,722	439,959	18.7	2,349,033	465,108	19.8	-0.2	5.7

## Demographics

### Total Population

	1999	2003	% Change
Atlantic	239,626	263,410	9.9
Bergen	857,052	897,569	4.7
Burlington	424,510	444,381	4.7
Camden	503,093	513,909	2.1
Cape May	98,009	101,845	3.9
Cumberland	140,112	149,306	6.6
Essex	747,355	796,313	6.6
Gloucester	250,492	266,962	6.6
Hudson	552,819	607,419	9.9
Hunterdon	124,553	128,265	3.0
Mercer	333,861	361,981	8.4
Middlesex	717,949	780,995	8.8
Monmouth	611,444	632,274	3.4
Morris	463,545	483,150	4.2
Ocean	497,533	546,081	9.8
Passaic	485,064	498,357	2.7
Salem	64,534	64,854	0.5
Somerset	288,090	311,600	8.2
Sussex	144,700	151,146	4.5
Union	498,759	529,360	6.1
Warren	100,312	109,219	8.9
New Jersey	8,143,412	8,638,396	6.1

### Child Population Under 18

	1999	2003	% Change
Atlantic	58,880	65,995	12.1
Bergen	183,596	205,154	11.7
Burlington	109,023	107,761	-1.2
Camden	141,708	135,238	-4.6
Cape May	23,089	21,926	-5.0
Cumberland	38,688	37,711	-2.5
Essex	190,685	210,987	10.6
Gloucester	70,351	66,579	-5.4
Hudson	131,013	139,912	6.8
Hunterdon	31,003	31,351	1.1
Mercer	79,843	86,550	8.4
Middlesex	164,164	186,361	13.5
Monmouth	156,929	160,934	2.6
Morris	109,402	119,543	9.3
Ocean	120,126	125,072	4.1
Passaic	127,424	133,175	4.5
Salem	17,177	15,862	-7.7
Somerset	66,519	80,334	20.8
Sussex	41,955	39,726	-5.3
Union	115,411	134,178	16.3
Warren	26,218	27,268	4.0
New Jersey	2,003,204	2,131,617	6.4

## Child and Family Poverty

### Child Poverty

	1998		2002		% Change
	#	%	#	%	
Atlantic	9,933	16.6	8,796	13.4	-11.4
Bergen	14,915	7.9	12,530	6.1	-16.0
Burlington	9,523	8.6	6,545	6.1	-31.3
Camden	25,610	17.7	17,734	13.2	-30.8
Cape May	3,731	15.8	2,711	12.4	-27.3
Cumberland	8,143	20.8	6,856	18.4	-15.8
Essex	45,193	23.3	36,979	17.7	-18.2
Gloucester	6,917	9.6	4,689	7.1	-32.2
Hudson	32,343	24.1	28,995	20.8	-10.4
Hunterdon	1,239	3.9	794	2.5	-35.9
Mercer	11,369	13.9	8,303	9.7	-27.0
Middlesex	16,493	9.8	13,947	7.5	-15.4
Monmouth	14,225	8.8	10,079	6.3	-29.1
Morris	5,511	4.9	4,028	3.4	-26.9
Ocean	14,062	11.4	12,803	10.3	-9.0
Passaic	23,232	17.8	21,328	16.1	-8.2
Salem	2,577	14.8	1,798	11.4	-30.2
Somerset	3,942	5.7	3,266	4.1	-17.1
Sussex	2,283	5.3	1,640	4.1	-28.2
Union	16,854	14.2	14,684	11.0	-12.9
Warren	2,444	9.1	1,815	6.7	-25.7
New Jersey	270,538	13.2	220,320	10.4	-18.6

### Children Receiving TANF (welfare)

	2003	2004	% Change
Atlantic	2,475	2,574	4.0
Bergen	1,250	1,479	18.3
Burlington	1,606	1,857	15.6
Camden	7,695	7,572	-1.6
Cape May	465	400	-14.0
Cumberland	2,324	2,363	1.7
Essex	17,493	18,085	3.4
Gloucester	1,211	1,532	26.5
Hudson	8,933	9,027	1.1
Hunterdon	62	60	-3.2
Mercer	3,706	3,914	5.6
Middlesex	2,717	3,035	11.7
Monmouth	2,830	2,748	-2.9
Morris	390	474	21.5
Ocean	1,503	1,393	-7.3
Passaic	5,291	5,692	7.6
Salem	606	673	11.1
Somerset	565	590	4.4
Sussex	170	207	21.8
Union	3,930	4,182	6.4
Warren	379	455	20.1
New Jersey	65,601	68,312	4.1

## Children Receiving Food Stamps

	2000	2004	% Change
Atlantic	4,772	6,915	44.9
Bergen	3,648	4,461	22.3
Burlington	3,409	4,602	35.0
Camden	16,872	18,032	6.9
Cape May	1,747	1,678	-3.9
Cumberland	5,888	7,273	23.5
Essex	41,182	37,795	-8.2
Gloucester	2,338	3,416	46.1
Hudson	23,503	23,608	0.4
Hunterdon	178	200	12.4
Mercer	6,091	7,341	20.5
Middlesex	5,131	7,022	36.9
Monmouth	6,629	7,060	6.5
Morris	717	1,202	67.6
Ocean	6,259	7,626	21.8
Passaic	16,634	21,210	27.5
Salem	1,266	1,943	53.5
Somerset	1,140	1,528	34.0
Sussex	434	743	71.2
Union	8,754	9,777	11.7
Warren	1,043	1,409	35.1
New Jersey	157,635	174,841	10.9

## Percent of Households Paying More Than 30 Percent of Income for Rent

	1989	1999	% Change
Atlantic	40.1	38.9	-3.0
Bergen	37.5	36.7	-2.1
Burlington	35.2	34.0	-3.4
Camden	41.3	39.9	-3.4
Cape May	40.3	38.9	-3.5
Cumberland	41.1	43.1	4.9
Essex	40.4	39.6	-2.0
Gloucester	38.3	38.7	1.0
Hudson	36.8	36.6	-0.5
Hunterdon	38.1	35.9	-5.8
Mercer	36.5	36.0	-1.4
Middlesex	35.2	33.6	-4.5
Monmouth	41.5	40.2	-3.1
Morris	33.3	31.5	-5.4
Ocean	49.2	44.0	-10.6
Passaic	41.0	41.0	0.0
Salem	40.1	38.1	-5.0
Somerset	34.5	33.5	-2.9
Sussex	43.8	35.7	-18.5
Union	38.1	36.5	-4.2
Warren	39.9	36.0	-9.8
New Jersey	38.7	37.5	-3.1

### State Tax Credit Recipients (EITC)

	2001	2003	% Change
Atlantic	9,073	10,785	18.9
Bergen	10,022	9,959	-0.6
Burlington	5,845	6,063	3.7
Camden	16,211	16,292	0.5
Cape May	2,442	2,313	-5.3
Cumberland	5,907	6,127	3.7
Essex	33,577	32,168	-4.2
Gloucester	4,272	4,314	1.0
Hudson	27,080	25,635	-5.3
Hunterdon	476	779	63.7
Mercer	7,715	7,852	1.8
Middlesex	13,420	13,629	1.6
Monmouth	8,341	8,247	-1.1
Morris	3,378	3,456	2.3
Ocean	8,891	8,904	0.1
Passaic	20,098	19,710	-1.9
Salem	1,280	1,516	18.4
Somerset	2,762	2,412	-12.7
Sussex	1,116	1,415	26.8
Union	14,046	13,637	-2.9
Warren	1,252	1,494	19.3
UNKNOWN	16,815	24,046	43.0
New Jersey	214,019	220,753	3.1

### Federal Tax Credit Recipients (EITC)

	1999	2003	% Change
Atlantic	18,815	23,213	23.4
Bergen	18,147	29,611	63.2
Burlington	12,613	17,555	39.2
Camden	30,335	38,835	28.0
Cape May	4,830	5,746	19.0
Cumberland	11,265	13,346	18.5
Essex	57,450	67,510	17.5
Gloucester	8,797	11,322	28.7
Hudson	44,223	56,500	27.8
Hunterdon	1,221	2,190	79.4
Mercer	15,513	18,645	20.2
Middlesex	24,670	33,748	36.8
Monmouth	16,570	21,605	30.4
Morris	7,260	10,417	43.5
Ocean	15,160	21,645	42.8
Passaic	34,749	42,207	21.5
Salem	3,100	3,629	17.1
Somerset	4,354	6,613	51.9
Sussex	2,651	3,998	50.8
Union	25,613	33,600	31.2
Warren	2,659	3,813	43.4
New Jersey	359,995	465,748	29.4

## Child Health

### Infant Mortality

	1997	2001	% Change
Atlantic	26	35	34.6
Bergen	50	57	14.0
Burlington	29	30	3.4
Camden	60	69	15.0
Cape May	12	8	-33.3
Cumberland	21	34	61.9
Essex	115	122	6.1
Gloucester	14	22	57.1
Hudson	73	62	-15.1
Hunterdon	7	6	-14.3
Mercer	36	26	-27.8
Middlesex	46	49	6.5
Monmouth	49	23	-53.1
Morris	24	19	-20.8
Ocean	36	29	-19.4
Passaic	42	60	42.9
Salem	3	3	0.0
Somerset	13	17	30.8
Sussex	4	6	50.0
Union	52	60	15.4
Warren	7	8	14.3
Unknown	8	0	N/A
New Jersey	727	745	2.5

### Babies Born With Low Birth Weight

	1998	2002	% Change
Atlantic	299	303	1.3
Bergen	684	736	7.6
Burlington	339	409	20.6
Camden	610	620	1.6
Cape May	58	60	3.4
Cumberland	138	177	28.3
Essex	1,367	1,154	-15.6
Gloucester	230	248	7.8
Hudson	772	678	-12.2
Hunterdon	88	101	14.8
Mercer	388	410	5.7
Middlesex	727	788	8.4
Monmouth	588	580	-1.4
Morris	403	409	1.5
Ocean	412	456	10.4
Passaic	612	653	6.7
Salem	50	45	-10.0
Somerset	315	335	6.3
Sussex	126	82	-34.9
Union	599	577	-3.7
Warren	57	100	75.4
New Jersey	8,862	8,921	0.7

**Percent of Pregnant Women Receiving Late  
or No Prenatal Care**

	1998	2002	% Change
Atlantic	29.4	30.9	5.1
Bergen	22.9	18.9	-17.5
Burlington	27.7	21.8	-21.3
Camden	35.2	29.3	-16.8
Cape May	19.6	20.4	4.1
Cumberland	31.7	29.5	-6.9
Essex	35.6	34.3	-3.7
Gloucester	32.1	22.7	-29.3
Hudson	31.6	31.9	0.9
Hunterdon	11.4	10.0	-12.3
Mercer	24.5	20.8	-15.1
Middlesex	19.7	18.4	-6.6
Monmouth	17.7	18.2	2.8
Morris	14.7	9.0	-38.8
Ocean	20.8	20.5	-1.4
Passaic	29.3	28.1	-4.1
Salem	50.3	28.7	-42.9
Somerset	14.9	12.8	-14.1
Sussex	19.7	9.1	-53.8
Union	26.6	25.8	-3.0
Warren	19.4	11.4	-41.2
New Jersey	25.6	23.1	-9.8

**Children Receiving Medicaid and FamilyCare**

	2002		2004		% Change	
	Medicaid	FC	Medicaid	FC	Medicaid	FC
Atlantic	14,059	2,739	14,918	2,444	6.1	-10.8
Bergen	14,682	7,499	15,702	8,580	6.9	14.4
Burlington	10,959	4,137	11,993	4,042	9.4	-2.3
Camden	33,532	6,889	34,681	7,399	3.4	7.4
Cape May	4,457	1,514	4,190	1,542	-6.0	1.8
Cumberland	12,659	2,456	13,460	2,435	6.3	-0.9
Essex	69,146	11,017	69,814	11,416	1.0	3.6
Gloucester	8,127	2,867	8,238	3,168	1.4	10.5
Hudson	49,535	9,279	50,174	9,754	1.3	5.1
Hunterdon	1,003	585	967	634	-3.6	8.4
Mercer	17,441	3,837	17,511	4,190	0.4	9.2
Middlesex	22,806	8,212	23,322	9,498	2.3	15.7
Monmouth	17,871	5,186	17,389	5,356	-2.7	3.3
Morris	5,064	2,302	5,832	2,636	15.2	14.5
Ocean	20,334	5,952	21,920	6,691	7.8	12.4
Passaic	36,530	10,493	38,436	11,540	5.2	10.0
Salem	3,340	857	3,573	815	7.0	-4.9
Somerset	4,363	1,566	4,691	1,916	7.5	22.3
Sussex	2,555	1,316	2,529	1,349	-1.0	2.5
Union	26,673	6,990	27,481	7,904	3.0	13.1
Warren	2,805	1,038	2,829	918	0.9	-11.6
New Jersey	377,941	96,731	389,650	104,227	3.1	7.7

## Abused and Neglected Children

### Substantiated Child Abuse/Neglect Referrals

	1998	2002	% Change
Atlantic	296	341	15.2
Bergen	285	242	-15.1
Burlington	449	419	-6.7
Camden	1,091	733	-32.8
Cape May	351	280	-20.2
Cumberland	374	343	-8.3
Essex	2,178	1,220	-44.0
Gloucester	218	280	28.4
Hudson	390	468	20.0
Hunterdon	53	60	13.2
Mercer	368	296	-19.6
Middlesex	613	430	-29.9
Monmouth	599	562	-6.2
Morris	154	121	-21.4
Ocean	474	469	-1.1
Passaic	696	552	-20.7
Salem	208	158	-24.0
Somerset	122	179	46.7
Sussex	132	87	-34.1
Union	579	549	-5.2
Warren	205	101	-50.7
Out-of-State	16	28	75.0
New Jersey	9,851	7,918	-19.6

### Child Abuse/Neglect Substantiations as a Percent of Referrals

	1998	2002	% Change
Atlantic	19.5	19.9	2.1
Bergen	23.8	24.3	2.1
Burlington	25.9	20.3	-21.6
Camden	24.5	19.9	-18.8
Cape May	32.4	26.6	-17.9
Cumberland	25.1	19.5	-22.3
Essex	32.0	26.8	-16.3
Gloucester	17.4	22.4	28.7
Hudson	13.6	18.5	36.0
Hunterdon	21.0	17.6	-16.2
Mercer	23.7	18.3	-22.8
Middlesex	24.7	18.4	-25.5
Monmouth	17.3	17.5	1.2
Morris	20.3	10.6	-47.8
Ocean	20.5	22.0	7.3
Passaic	25.5	23.8	-6.7
Salem	32.1	31.1	-3.1
Somerset	25.1	14.8	-41.0
Sussex	31.5	22.5	-28.6
Union	33.9	29.1	-14.2
Warren	22.2	16.1	-27.5
Out-of-State	15.0	26.9	79.3
New Jersey	24.5	21.2	-13.5

### Family Problem Referrals

	1998	2002	% Change
Atlantic	969	1,275	31.6
Bergen	2,607	2,777	6.5
Burlington	1,311	1,455	11.0
Camden	2,571	2,870	11.6
Cape May	548	466	-15.0
Cumberland	1,094	1,028	-6.0
Essex	4,516	3,805	-15.7
Gloucester	670	979	46.1
Hudson	2,850	3,284	15.2
Hunterdon	225	385	71.1
Mercer	2,550	2,098	-17.7
Middlesex	2,972	2,826	-4.9
Monmouth	2,702	2,304	-14.7
Morris	1,910	1,609	-15.8
Ocean	759	1,146	51.0
Passaic	2,585	2,983	15.4
Salem	443	438	-1.1
Somerset	788	925	17.4
Sussex	650	899	38.3
Union	1,497	1,881	25.7
Warren	646	912	41.2
Out-of-State	3	2	-33.3
New Jersey	34,866	36,347	4.2

### Children in Out-of-Home Placements

	1999	2003	% Change
Atlantic	328	491	49.7
Bergen	286	420	46.9
Burlington	368	487	32.3
Camden	1,015	1,335	31.5
Cape May	157	259	65.0
Cumberland	306	420	37.3
Essex	2,056	2,899	41.0
Gloucester	212	241	13.7
Hudson	728	935	28.4
Hunterdon	32	64	100.0
Mercer	552	533	-3.4
Middlesex	491	931	89.6
Monmouth	656	773	17.8
Morris	198	224	13.1
Ocean	412	641	55.6
Passaic	428	550	28.5
Salem	169	260	53.8
Somerset	90	223	147.8
Sussex	141	144	2.1
Union	687	1,111	61.7
Warren	86	117	36.0
New Jersey	9,398	13,058	38.9

## Early Care and Education

### Preschool Enrollments

	1999-00	2003-04	% Change
Atlantic	812	1,418	74.6
Bergen	1,135	1,628	43.4
Burlington	823	1,684	104.6
Camden	2,348	3,275	39.5
Cape May	18	413	2,194.4
Cumberland	693	2,538	266.2
Essex	1,244	9,302	647.7
Gloucester	184	719	290.8
Hudson	2,392	8,015	235.1
Hunterdon	6	13	116.7
Mercer	323	1,784	452.3
Middlesex	841	2,470	193.7
Monmouth	1,143	2,322	103.1
Morris	48	226	370.8
Ocean	212	525	147.6
Passaic	65	4,643	7,043.1
Salem	160	375	134.4
Somerset	136	573	321.3
Sussex	10	9	-10.0
Union	1,510	4,110	172.2
Warren	91	341	274.7
New Jersey	14,194	46,383	226.8

### Licensed Child Care Centers

	2002	2004	% Change
Atlantic	107	103	-3.7
Bergen	412	421	2.2
Burlington	161	164	1.9
Camden	246	250	1.6
Cape May	36	35	-2.8
Cumberland	62	63	1.6
Essex	507	533	5.1
Gloucester	134	136	1.5
Hudson	274	293	6.9
Hunterdon	79	76	-3.8
Mercer	221	230	4.1
Middlesex	283	296	4.6
Monmouth	293	290	-1.0
Morris	281	288	2.5
Ocean	159	161	1.3
Passaic	203	220	8.4
Salem	24	26	8.3
Somerset	180	186	3.3
Sussex	68	71	4.4
Union	282	288	2.1
Warren	54	62	14.8
New Jersey	4,066	4,192	3.1

## Child Care Center Capacity

	2002	2004	% Change
Atlantic	6,061	6,035	-0.4
Bergen	30,425	31,854	4.7
Burlington	11,830	12,062	2.0
Camden	20,136	20,058	-0.4
Cape May	1,804	1,844	2.2
Cumberland	4,997	5,448	9.0
Essex	35,189	38,043	8.1
Gloucester	8,073	8,543	5.8
Hudson	15,837	17,677	11.6
Hunterdon	5,577	5,913	6.0
Mercer	17,143	17,937	4.6
Middlesex	22,574	23,789	5.4
Monmouth	21,110	21,973	4.1
Morris	19,473	20,668	6.1
Ocean	10,189	10,393	2.0
Passaic	16,369	18,932	15.7
Salem	1,250	1,265	1.2
Somerset	15,042	16,093	7.0
Sussex	3,068	3,539	15.4
Union	19,761	21,130	6.9
Warren	2,393	2,838	18.6
New Jersey	288,301	306,034	6.2

## Registered Family Child Care Providers

	1996	2003	% Change
Atlantic	206	129	-37.4
Bergen	219	238	8.7
Burlington	225	236	4.9
Camden	387	259	-33.1
Cape May	69	18	-73.9
Cumberland	398	286	-28.1
Essex	372	546	46.8
Gloucester	160	98	-38.8
Hudson	314	515	64.0
Hunterdon	92	69	-25.0
Mercer	253	247	-2.4
Middlesex	256	210	-18.0
Monmouth	203	223	9.9
Morris	181	130	-28.2
Ocean	128	134	4.7
Passaic	269	245	-8.9
Salem	61	82	34.4
Somerset	189	113	-40.2
Sussex	88	78	-11.4
Union	184	213	15.8
Warren	77	77	0
New Jersey	4,331	4,146	-4.3

## Troubled Teens

### Teen Births

	1998	2002	% Change
Atlantic	395	383	-3.0
Bergen	240	228	-5.0
Burlington	389	353	-9.3
Camden	869	706	-18.8
Cape May	113	92	-18.6
Cumberland	354	370	4.5
Essex	1,393	1,083	-22.3
Gloucester	233	181	-22.3
Hudson	976	698	-28.5
Hunterdon	20	15	-25.0
Mercer	440	350	-20.5
Middlesex	566	514	-9.2
Monmouth	402	381	-5.2
Morris	131	109	-16.8
Ocean	354	346	-2.3
Passaic	889	708	-20.4
Salem	102	94	-7.8
Somerset	131	127	-3.1
Sussex	65	49	-24.6
Union	533	481	-9.8
Warren	66	60	-9.1
New Jersey	8,661	7,328	-15.4

### Juvenile Arrests

	1999	2003	% Change
Atlantic	3,699	2,809	-24.1
Bergen	5,217	4,711	-9.7
Burlington	2,887	2,532	-12.3
Camden	8,778	8,511	-3.0
Cape May	1,888	1,437	-23.9
Cumberland	2,639	2,048	-22.4
Essex	7,041	6,208	-11.8
Gloucester	2,456	1,687	-31.3
Hudson	4,067	3,612	-11.2
Hunterdon	525	391	-25.5
Mercer	4,841	4,918	1.6
Middlesex	3,411	3,172	-7.0
Monmouth	4,607	3,931	-14.7
Morris	2,492	1,981	-20.5
Ocean	3,903	3,648	-6.5
Passaic	4,420	4,241	-4.0
Salem	507	562	10.8
Somerset	1,925	1,615	-16.1
Sussex	621	665	7.1
Union	4,882	3,350	-31.4
Warren	663	534	-19.5
Unknown	98	105	7.1
New Jersey	71,567	62,668	-12.4

### Juvenile Commitments

	1999	2003	% Change
Atlantic	55	45	-18.2
Bergen	24	23	-4.2
Burlington	19	14	-26.3
Camden	206	376	82.5
Cape May	7	1	-85.7
Cumberland	18	8	-55.6
Essex	146	121	-17.1
Gloucester	10	14	40.0
Hudson	128	118	-7.8
Hunterdon	1	3	200.0
Mercer	50	67	34.0
Middlesex	75	76	1.3
Monmouth	25	34	36.0
Morris	2	6	200.0
Ocean	22	27	22.7
Passaic	163	97	-40.5
Salem	19	35	84.2
Somerset	19	6	-68.4
Sussex	6	9	50.0
Union	72	76	5.6
Warren	10	3	-70.0
New Jersey	1,077	1,159	7.6

### Juvenile Detention Centers, Average Daily Population

	1999	2003	% Change
Atlantic	40.4	34.1	-15.6
Bergen	29.0	18.8	-35.2
Burlington	30.2	23.4	-22.5
Camden	73.0	94.6	29.6
Cape May	0	0	0
Cumberland	35.6	33.5	-5.9
Essex	222.8	243.6	9.3
Gloucester	14.6	13.9	-4.8
Hudson	116.4	86.7	-25.5
Hunterdon	0	0	0
Mercer	53.9	66.6	23.6
Middlesex	81.6	76.4	-6.4
Monmouth	56.3	40	-29.0
Morris	18.1	17.6	-2.8
Ocean	36.0	30.5	-15.3
Passaic	89.8	84.6	-5.8
Salem	14.8	0	N/A
Somerset	0	0	0
Sussex	14.8	12.9	-12.8
Union	56.3	39.4	-30.0
Warren	21.3	16.1	-24.4
New Jersey	1,004.8	932.7	-7.2

## School Children

### Children Passing Statewide Tests by District Factor Group\*

2001-02							
	Language Arts			Math			Science**
	4	8	11	4	8	11	8
A	60.4	42.9	56.5	42.0	28.6	34.7	39.8
B	71.7	63.5	74.3	59.8	46.8	59.9	67.4
CD	75.2	69.0	79.7	63.0	49.1	63.3	74.1
DE	81.3	77.4	84.3	70.8	58.8	69.8	79.4
FG	85.1	81.1	86.7	77.3	66.3	75.9	84.6
GH	87.3	85.1	88.7	80.3	71.2	79.4	86.5
I	92.9	90.2	94.2	86.9	80.2	88.9	92.1
J	93.1	92.6	97.8	91.2	83.3	94.1	95.1
2002-03							
	Language Arts			Math			Science**
	4	8	11	4	8	11	8
A	54.7	44.4	55.1	44.7	28.2	31.9	38.1
B	69.5	64.0	72.8	58.1	45.0	55.2	64.2
CD	74.2	70.4	77.8	64.6	47.3	59.6	71.1
DE	82.2	78.2	82.9	71.3	58.8	67.0	78.1
FG	84.4	80.9	86.3	74.4	64.4	73.4	82.6
GH	87.2	85.5	87.7	77.9	69.9	77.2	86.0
I	92.1	90.7	93.0	85.1	78.4	86.5	90.6
J	94.2	94.9	94.4	89.4	85.2	92.2	94.5

\* District Factor Groups are a socio-economic measure, with A being the poorest districts and J being the most wealthy.

\*\* The state is still developing Science tests for grades 4 and 11.

## Special Education Enrollments

	1999-00		2003-04		% Change
	#	%	#	%	
Atlantic	6,463	15.1	7,079	15.1	9.5
Bergen	16,590	13.7	17,966	13.8	8.3
Burlington	12,106	17.3	13,048	17.2	7.8
Camden	14,173	16.0	15,084	16.9	6.4
Cape May	2,818	18.3	2,805	19.1	-0.5
Cumberland	4,602	18.1	4,839	18.6	5.1
Essex	15,811	13.2	18,921	14.9	19.7
Gloucester	7,498	17.0	8,049	16.8	7.3
Hudson	11,547	14.6	10,703	13.1	-7.3
Hunterdon	2,983	14.0	3,197	14.0	7.2
Mercer	9,280	16.7	11,963	20.1	28.9
Middlesex	14,649	13.9	15,494	13.4	5.8
Monmouth	15,208	14.9	15,867	14.6	4.3
Morris	9,742	13.6	11,266	14.3	15.6
Ocean	11,328	15.6	12,629	16.0	11.5
Passaic	10,858	14.8	11,813	14.8	8.8
Salem	1,738	14.7	1,884	15.9	8.4
Somerset	6,434	14.5	7,360	14.2	14.4
Sussex	4,110	15.0	4,280	15.1	4.1
Union	10,492	13.3	11,631	13.5	10.9
Warren	2,670	15.2	2,870	15.2	7.5
New Jersey	191,100	14.8	208,748	15.1	9.2

## School Violence

	1999-00	2002-03	% Change
Atlantic	1,067	1,377	29.1
Bergen	1,307	1,681	28.6
Burlington	1,361	1,274	-6.4
Camden	1,936	2,350	21.4
Cape May	438	459	4.8
Cumberland	1,137	918	-19.3
Essex	2,246	1,277	-43.1
Gloucester	1,216	936	-23.0
Hudson	897	1,247	39.0
Hunterdon	220	208	-5.5
Mercer	993	1,856	86.9
Middlesex	1,381	1,483	7.4
Monmouth	1,500	1,432	-4.5
Morris	617	782	26.7
Ocean	1,322	1,330	0.6
Passaic	1,175	1,232	4.9
Salem	175	195	11.4
Somerset	829	504	-39.2
Sussex	397	352	-11.3
Union	1,220	1,007	-17.5
Warren	249	286	14.9
New Jersey	21,683	22,186	2.3

## **Data Sources and Definitions**

### **Statewide Snapshot**

**Federal Poverty Levels, 2003.** U.S. Department of Health and Human Services.

**Percent of All Poor Families by Age of Children, 2000 and 2003.** As reported by the U.S. Bureau of the Census, American Community Survey Multi-Year Profiles.

**Median Family Income by Race, 1999 and 2003.** As reported by the U.S. Bureau of the Census, Summary Tape File 1, charts P77, P155A, P155B and P155H (1999) and American Community Survey, charts P101, P101A, P101B and P101J (2003).

**Uninsured Children, 1999, 2002 and 2003.** As reported by the U.S. Bureau of the Census, Current Population Survey, Table HI-5.

**Insurance Type for Children Under 18, 1999 and 2003.** As a percent of all children, as reported by the U.S. Bureau of the Census, Current Population Survey, Table HI-5.

**Uninsured Children at or Below 200 Percent of the Federal Poverty Level, 1999-01, 2000-02, 2001-03.** As reported by the U.S. Bureau of the Census, Health Insurance Data, Low Income Uninsured Children by State.

**Disconnected Youths, 2000, 2002 and 2003.** As a percent of all children, as reported by the U.S. Bureau of the Census, American Community, Public Use Microdata.

**Grandparents Responsible for Grandchildren, 2000 and 2003.** As reported by the U.S. Bureau of the Census, American Community Survey Multi-Year Profiles.

### **Demographics**

**Total Population, 1999 and 2003.** County population estimates by selected age categories and sex, July 1, 1999 and 2003. As reported by the U.S. Bureau of the Census.

**Child Population Under 18, 1999 and 2003.** County population estimates by selected age categories and sex, July 1, 1999 and 2003. As reported by the U.S. Bureau of the Census.

### **Child and Family Poverty**

**Child Poverty, 1998 and 2002.** As reported by the U.S. Bureau of the Census, Housing and Household Economic Statistics Division, Small Area Estimates Branch. Children under 18.

**Children Receiving TANF, 2003 and 2004.** Number of children living in families receiving Temporary Aid to Needy Families, as reported by the NJ Department of Human Services, Division of Family Development. Statistics are for June of each year. ACNJ used a 1-year comparison for welfare numbers because recent trends show an increase in the number of children on welfare. A longer comparison would suggest that welfare rolls are still declining. Statistics for earlier years are available at [www.acnj.org](http://www.acnj.org).

**Children Receiving Food Stamps, 2000 and 2004.** As reported by the NJ Department of Human Services, Division of Family Development, Current Program Statistics.

**Households Paying More Than 30 Percent of Income for Rent, 1989 and 1999.** As reported by the U.S. Bureau of the Census, American Factfinder, Summary Tape File 3, chart H050 (1989) and chart H69 (1999).

**State Earned Income Tax Credit (EITC), 2001 and 2003.** Number of NJ taxpayers filing for state EITC for tax years 2001 and 2003, as reported by the NJ Department of Treasury. Unknown number represents taxpayers for whom a reliable address was not known.

**Federal Earned Income Tax Credit (EITC), 1999 and 2003.** Number of New Jersey taxpayers filing for the federal EITC, as reported by the Internal Revenue Service, Wage and Investment Operating Division, Stakeholders Partnership, Education and Communication.

## **Child Health**

**Infant Mortality, 1997 and 2001.** Number of infants under one who died during that year, as reported by the NJ Department of Health and Senior Services, Center for Health Statistics, NJ State Health Assessment Data.

**Low Birth Weight Infants, 1998 and 2002.** Number of babies born weighing less than 2,500 grams, as reported by the NJ Department of Health and Senior Services, Center for Health Statistics, NJ State Health Assessment Data.

**Prenatal Care, 1998 and 2002.** Live births for which the mother received late prenatal care (onset in second or third trimester) and no prenatal care, as reported by the NJ Department of Health and Senior Services, Center for Health Statistics, NJ State Health Assessment Data.

**Children Receiving Medicaid/FamilyCare, 2002 and 2004.** As reported by the NJ Department of Human Services. Data is from March of each year.

## **Abused and Neglected Children**

**Child Abuse/Neglect Substantiated Referrals, 1998 and 2002.** Number of referrals in which the division uncovered enough evidence to “substantiate” a claim of abuse or neglect, as reported by the NJ Department of Human Services, Division of Youth and Family Services, Annual Reports, tables 11 and 13 (1998) and table 10 (2002).

**Percent of Abuse/Neglect Referrals Substantiated, 1998 and 2002.** As reported by the NJ Department of Human Services, Division of Youth and Family Services, Annual Reports, table 10 (1998) and table 9 (2002).

**Family Problem Referrals, 1998 and 2002.** As reported by the NJ Department of Human Services, Division of Youth and Family Services, Annual Reports, table 20 (1998) and table 27 (2002). These are families who have not abused or neglected their children according to statute, but whom the Division of Youth and Family Services determine to be at risk of harming their children unless an intervention occurs.

**Out-of-Home Placements, 1999 and 2003.** As reported by the NJ Department of Human Services, Division of Youth and Family Services. Includes children under 18 in all placements, including foster care, relative care, group homes, residential treatment and institutions. Statistics represent the number of placements in December of each year.

## **Early Care and Education**

**Preschool Enrollments, 1999-00 and 2003-04.** Number of three- and four-year-olds enrolled in half- and full-day, NJ Department of Education-approved programs, operated both in-district and in community centers, as reported by the NJ Department of Education, October 1999 and 2003 enrollment counts. Does not include children in Head Start centers who are not enrolled in programs that receive state funding.

**Child Care Centers, 2002 and 2004.** Number of state-licensed child care centers, as reported by the NJ Department of Human Services, Division of Youth and Family Services, Bureau of Licensing.

**Child Care Center Capacity, 2002 and 2004.** Number of available slots for children in state-licensed child care centers, as reported by the NJ Department of Human Services, Division of Youth and Family Services, Bureau of Licensing.

### **Family Day Care Providers, 1996 and 2003.**

Number of registered providers offering child care in their homes, as reported by the NJ Department of Human Services, Division of Youth and Family Services, Bureau of Licensing.

### **Troubled Teens**

**Teen Births, 1998 and 2002.** Births to teenagers 15- to 19-years-old, as reported by the NJ Department of Health and Senior Services, Center for Health Statistics, NJ State Health Assessment Data.

**Juvenile Arrests, 1999 and 2003.** The number of juvenile arrests (under 18), as reported by the NJ Department of Law and Public Safety, Uniform Crime Report 1999 and 2003.

**Juvenile Commitments, 1999 and 2003.** The number of juveniles (ages 13-18) committed to state detention centers, as reported by the NJ Juvenile Justice Commission.

**Juvenile Detention Centers, Average Daily Population, 1999 and 2003.** As reported by the NJ Juvenile Justice Commission, Juvenile Justice Statistics. Juveniles admitted to state-run commitment programs are not included. Most children in detention are between 12 and 18 years old, except in certain cases. For instance, younger children can be detained if they commit a 1st or 2nd degree offense or arson and youths over 18 may be detained if they were juvenile when the offense occurred.

### **School Children**

#### **Children Who Passed the State Assessments by District Factor Group, 2001-02 and 2002-03.**

Percentage of students passing state tests in grades 4, 8 and 11, as reported by the NJ Department of Education.

#### **Special Education Enrollments, 1999-00 and 2003-04.**

Students ages 6-21 enrolled in public special education programs, as reported by the NJ Department of Education, Office of Special Education. The numbers include special education students attending private schools with public dollars but do not include students in preschool.

**School Violence, 1999-00 and 2002-03.** As reported by the NJ Department of Education, Commissioner of Education's Report on Violence, Vandalism and Substance Abuse in New Jersey Public Schools May 2001 and June 2004. In 2002, the Department of Education revised the incident definitions to provide greater detail and bring the definition of all incidents in line with state criminal statute and code. As a result, caution should be used when comparing with previous years.